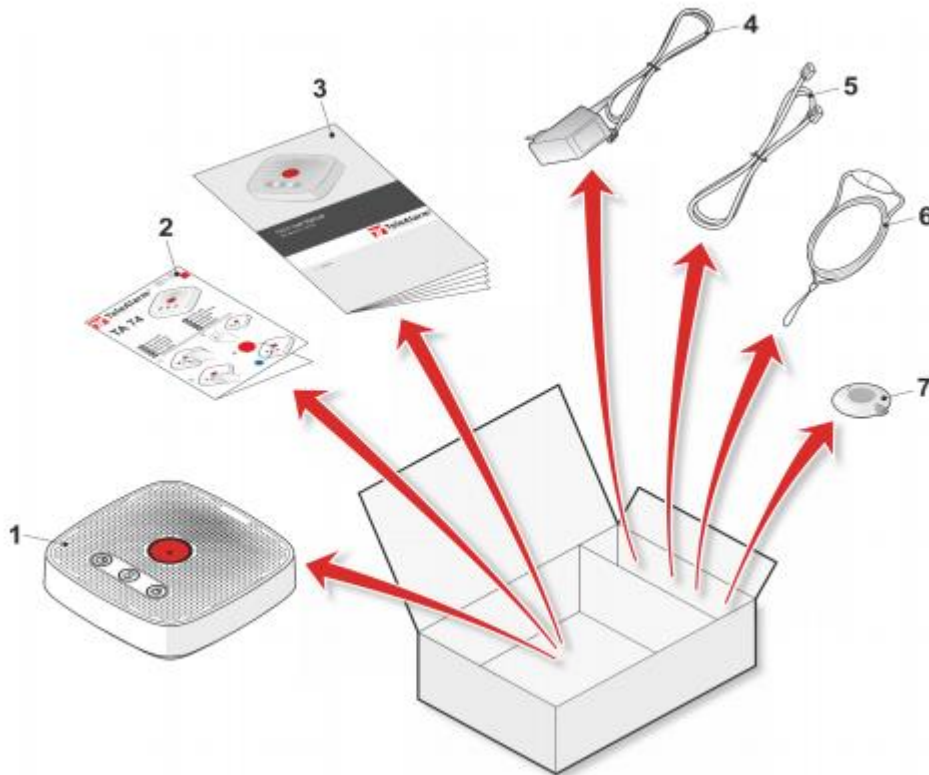


GSM Personal Alarm Connection Guidelines

Setup instructions for homes with no phone-line or digital broadband

What is in the Box:



1. TA74 alarm unit with SIM card installed.
2. Quick guide for users
3. Optional manual for technicians/installers
4. Power adapter
5. Optional telephone or network cable (if either is required)
6. Necklace and Bracelet
7. Wireless Transmitter.

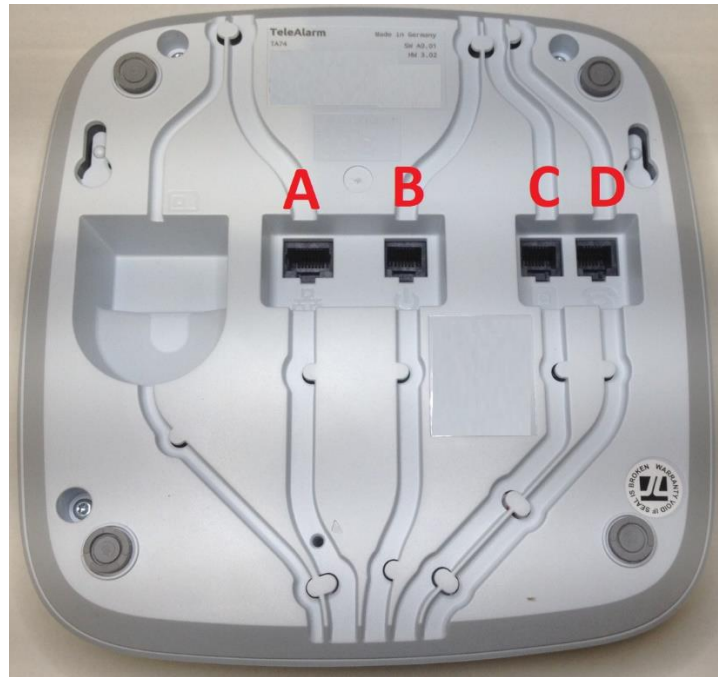
Additional accessories and monitored peripherals (e.g. monitored smoke alarms or carbon monoxide detectors) can be supplied on request.

**Technical Support Telephone Number (24 hours):
028 2036 0280 (Option 3)**

TA74 Installation Guidelines:

The alarm unit has a multi-network SIM card installed and has been configured and tested unless otherwise stated in your order.

Please look at the base of your alarm system and identify the sockets labeled in the image below. **Only Socket B is to be used.**



Socket A is not to be used.

Socket B is for the power supply.

Socket C is not to be used.

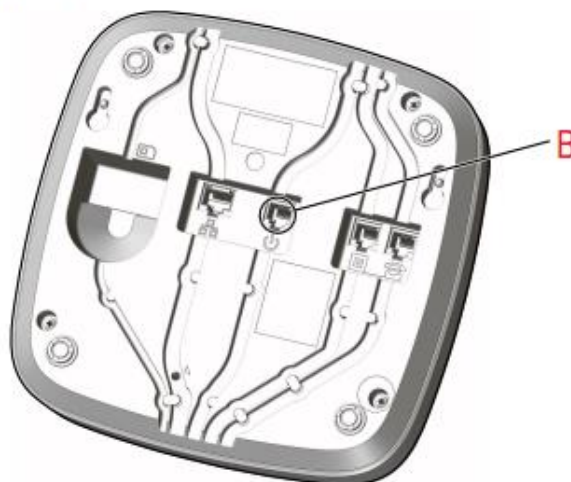
Socket D is not to be used.

Note: Be aware of potential limitations due to local mobile network availability. Install the unit close to a window. Do not leave the unit sitting on or close to other electrical devices.

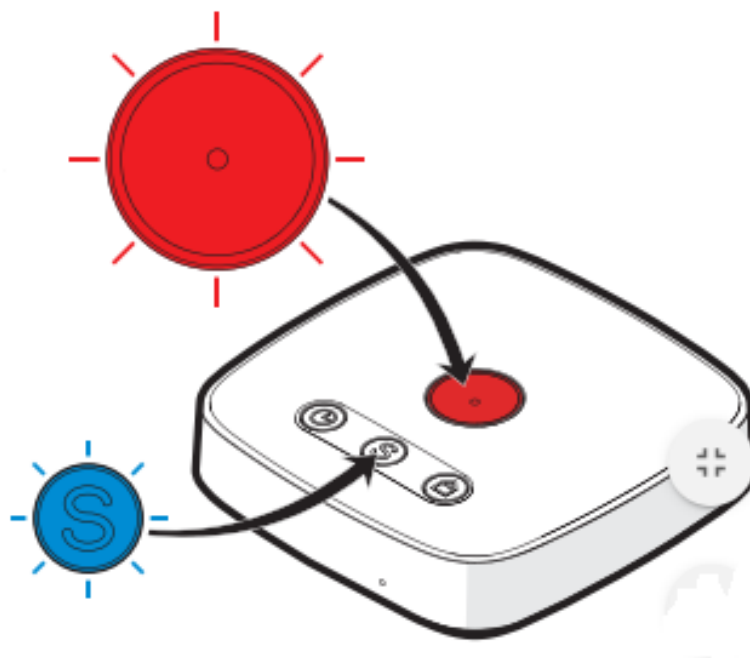
There is a backup battery in the alarm unit. In the event of a power failure, the unit will remain powered on for a minimum of 36 hours, allowing for one 30 minute call.

- (1) Insert the smaller plug of the power cable into **socket B** and insert the larger plug into an electrical socket. Avoid using an extension lead if possible.

Power connection



- (2) Turn the unit around so that the buttons are visible. After one minute, a steady red and blue light will be seen on the unit indicating the unit is in its standby mode.



Note: if the unit's blue light continues to flash, power down the unit and try a different location within the house.

- (3) Press the red emergency button on the base unit. An operator will answer and greet you. Inform the operator that you are setting up your alarm and are testing the alarm base unit.



- (4) Next, test the pendant alarm button by pressing it and inform the operator you are testing the alarm pendant button.



Do not hesitate to press the transmitter day or night, if help is required.

The maximum transmission range of the pendant button is 300m. The button will operate from anywhere in your home. You can also test the pendant button to ascertain the furthest point in your garden it will transmit from.

Troubleshooting: The blue button gives indication of the status of the unit. A steady blue light indicates normal standby mode. A flashing blue button indicates a problem. Press the blue button once and the unit will announce the issue e.g., “line failure” or “power failure”. Please call us on **028 2036 0280** for further assistance with trouble-shooting.

If you have not already done so, please return your completed information sheet containing your information and keyholders details to monitoring@taskconnect.co.uk or by post to: TASK Connect, 103A Gilford Road, Lurgan, Co. Armagh, BT66 7AH. If you choose to mail it, please use recorded or tracked delivery for added security.